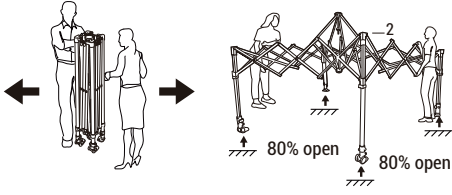


# SETTING UP

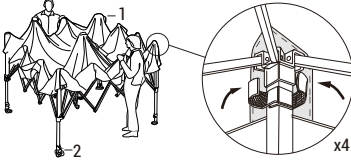
## 1 OPENING THE CANOPY FRAME

- With a partner, stand across from each other.
- Grasp a truss at the top of the frame (2) and the other truss at the bottom, as shown. Lift slightly off ground and step backwards while squeezing trusses together.



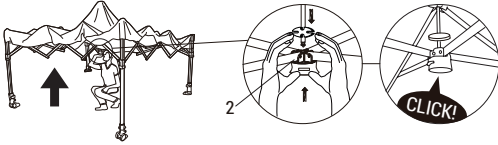
## 2 ATTACHING THE CANOPY

- Unfold the canopy (1) and place on top of the canopy frame (2).
- Secure the canopy (1) top to the corners of the canopy frame (2) using the Velcro connections.



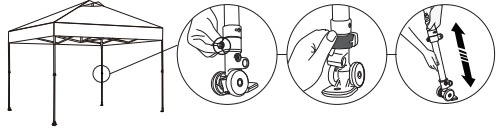
## 3 LOCKING THE FRAME

- Lift up one side of the frame (2) and walk under it.
- Place one hand on the upper frame and use the other hand to push the central hub straight up until it clicks into the central pole.



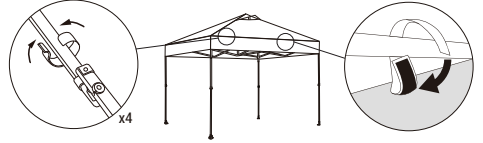
## 4 ADJUSTING THE CANOPY HEIGHT

- Unlock the switch and loosen the screws.
- Lift up one side. Grasp the outer or upper leg with one hand and pull out the inner leg with the other.
- Set legs to desired height.
- Tighten the screws and lock the switch.



## 5 FASTEN THE VELCROS INSIDE THE CANOPY TOP

- Fasten the Velcros straps on the inner side of the canopy top valance to the eave assemblies.
- Attach the Velcro on the inside of the canopy top to the center of the ceiling assemblies.



## 6 SECURING THE CANOPY IN PLACE

- Insert a stake (3) into the foot of each canopy leg.
- Measure out each leg to a proper distance and secure four stakes (3) to the ground. Attach the ropes to the canopy top and tie the attached ropes to the stakes in the ground. Ensure the ropes have the proper tension by adjusting the plastic adjusters on the ropes.
- Slide the locking tab over the knob to secure the top tightly.



# TAKING DOWN THE CANOPY

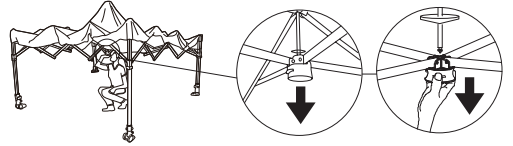
## 1 REMOVING THE STAKES AND RETRACTING THE LEGS

- Pull up all stakes from the ground.
- Unlock the switch and lower all legs.



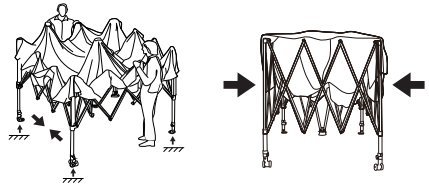
## 2 UNLOCKING THE CANOPY

- From underneath the canopy, press in the orange lock button. Pull down on the central hub until it is separated from the central pole.



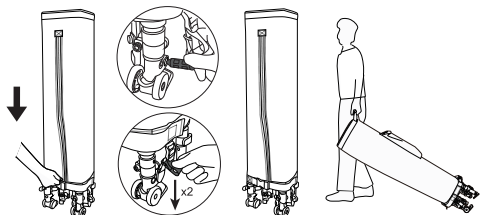
## 3 FOLDING THE FRAME

- Lift the canopy off the ground 2-3 inches and walk it in from both sides until the frame is fully closed.



## 4 PACKING THE CANOPY IN THE STORAGE BAG

Position the cover bag zip to align with the 2 wheeled legs. Slide down the bag over the closed frame and zippered. Loosen the strap and insert the red plug into the opening in the footpad and tighten straps by pulling down the strap loop.



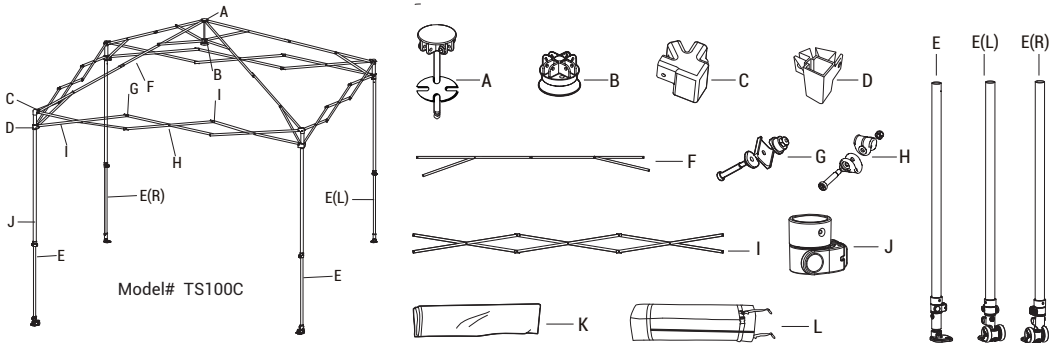
# Warranty

The manufacturer warrants for a period of 1 year from the original date of purchase, this product against any defects in materials or workmanship. At its discretion, the manufacturer may provide replacement parts to the original purchaser. Original receipt or proof of purchase as well as proof of defect is required. The manufacturer will not be responsible for shipping costs incurred outside the continental USA. Warranty is valid for the original purchaser 1 year from the date of purchase and is not transferable. This warranty does not cover any product purchased through non-authorized dealers and/or online auction websites.

## WHAT IS NOT COVERED

This 1 Year Limited Warranty does not cover normal wear and tear, abuse or misuse of this product including damage from inclement weather conditions, such as wind, rain, or hail. In case of inclement weather, remove all valuables and persons and seek appropriate shelter. Under no circumstances will the manufacturer be liable or responsible for any incidental or consequential damages. This product is designed and intended for recreational use only. Prolonged exposure to UV rays will cause any fabric to fade and deteriorate and is NOT covered by this 1 Year Limited Warranty. All replacement products or parts will assume the remaining warranty of the original product. This warranty gives you specific legal rights. You may also have other rights which vary from state to state.

# SPARE PARTS



Part	Description	Reference No.
A	Central Pole	UNCP82GDCL
B	Central Bottom Hub	ENCH00GYDK
C	Leg cap-28	EBLC11GYDK
D	Slider-28	EBLS11GYDK
E	Leg-No Wheel	IALA10GYNL
E(L)	Leg With wheel(Left)	IALA10GYLE
E(R)	Leg With wheel(right)	IALA10GYRI
F	Ceiling Assembly	UNCA10GYDK
G	M5-Bolt Kit	NNBKM5GYDK
H	M4-Bolt Kit	UNBKM4GYDK
I	Eave Assembly	EBEA10GYDK
J	Leg Extend	IALE11GYDK
K	Top Fabric-White	CST110WHDK
	Top Fabric-Blue	CST110BLDK
	Top Fabric-Grey	CST110GYDK
	Top Fabric-Greenish Blue	CST110GBDK
	Top Fabric-Sky Blue	CST110SBDK
	Top Fabric-Black	CST110BKDK
	Top Fabric-Beige	CST110BEDK
	Top Fabric-Pink	CST110PKDK
	Top Fabric-Red	CST110RDDK
L	Sto-N-Go Cover Bag	IACB10BKSG



## NEED ASSISTANCE?

ease contact our customer service team.



[Service@crownsadesusa.com](mailto:Service@crownsadesusa.com)

Toll Free (888) 877-6789

Mon-Fri 9:00 AM - 5:00 PM PST



[www.crown-outdoor.com](http://www.crown-outdoor.com)